

PART OF THE N.W. 1/4 OF SEC. 14, AND N.E. 1/4 OF SEC. 15, T.5N., R.1W., S.L.B. & M.

500

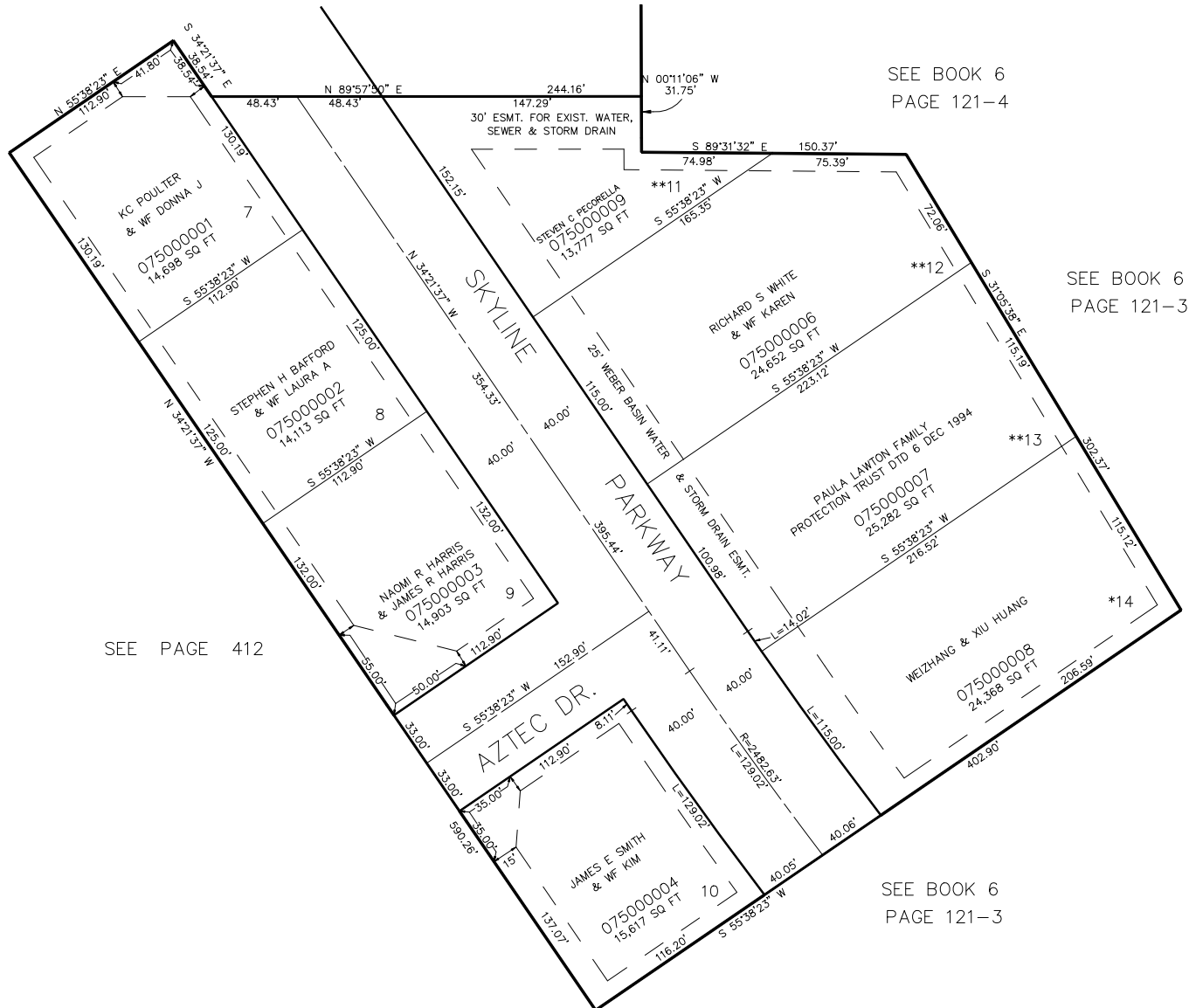
HIDDEN SHADOW ESTATES NO. 2 AMENDED

IN OGDEN CITY

TAXING UNIT: 25

SCALE 1" = 50'

SEE PAGE 446



10' UTILITY & DRAINAGE EASEMENTS
EACH SIDE OF PROPERTY LINES AS
INDICATED BY DASHED LINES EXCEPT
AS OTHERWISE SHOWN.

FOR AMENDED DEDICATION
PLAT SEE BOOK 46,
PAGE 57 OF RECORDS.

FOR COMPLETE ENG DATA SEE
ORIGINAL DEDICATION PLAT IN
BOOK 43, PAGE 81 OF RECORDS.

*SEE ORIGINAL DEDICATION PLAT
FOR NON BUILDABLE AREAS

**SEE CORRECTION AFFIDAVIT
FOR BUILDABLE AREA # 1711943
2078-6 20-JUN-2000